



PropertyLine



33 Caldervale

Orton Longueville, Peterborough, PE2 7HX

£1,150 PCM

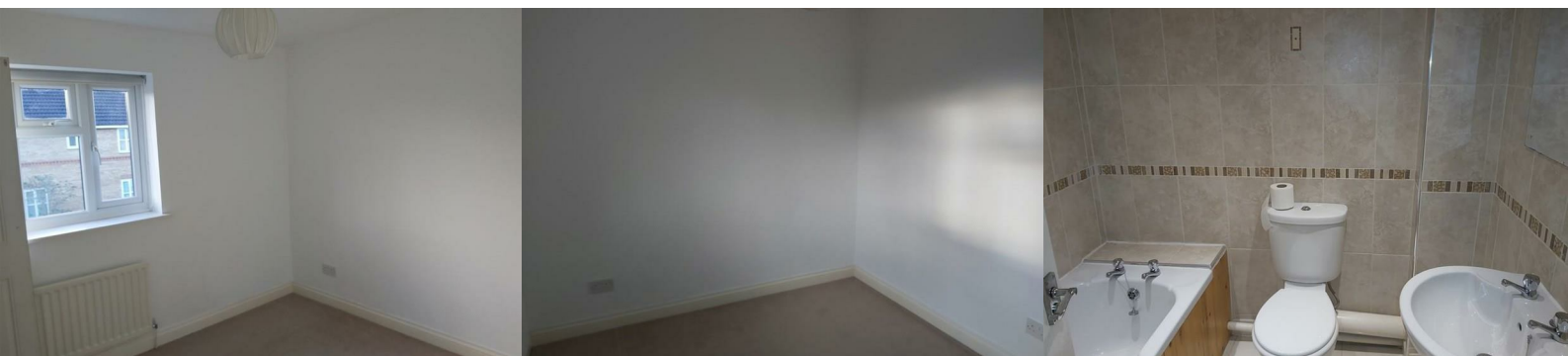


THREE BEDROOM - SEMI DETACHED - LOCATED IN THE POPULAR AREA OF ORTON LONGUEVILLE - PROPERTY COMPRISES OF ENTRANCE LOBBY - LOUNGE - KITCHEN - TWO DOUBLE BEDROOMS - SINGLE BEDROOM - FAMILY BATHROOM - REAR GARDEN - DRIVEWAY - GARAGE

Well presented 3 bedroom semi-detached house in pleasant cul-de-sac situated in a popular location with easy access to the A1(M).

Accommodation briefly comprising of entrance lobby, lounge and kitchen. To first floor 2 double bedrooms and single bedroom with a family bathroom.

Benefits include recent decor, fitted kitchen, gas central heating, enclosed rear garden and driveway leading to a single garage.



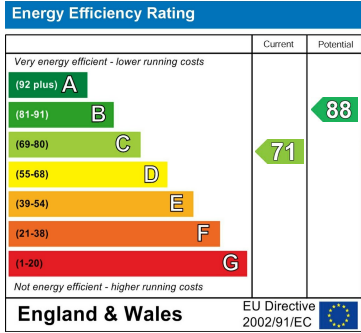
Area Map



Floor Plans



Energy Efficiency Graph



These particulars, whilst believed to be accurate are set out as a general outline only for guidance and do not constitute any part of an offer or contract. Intending purchasers should not rely on them as statements of representation of fact, but must satisfy themselves by inspection or otherwise as to their accuracy. No person in this firms employment has the authority to make or give any representation or warranty in respect of the property.